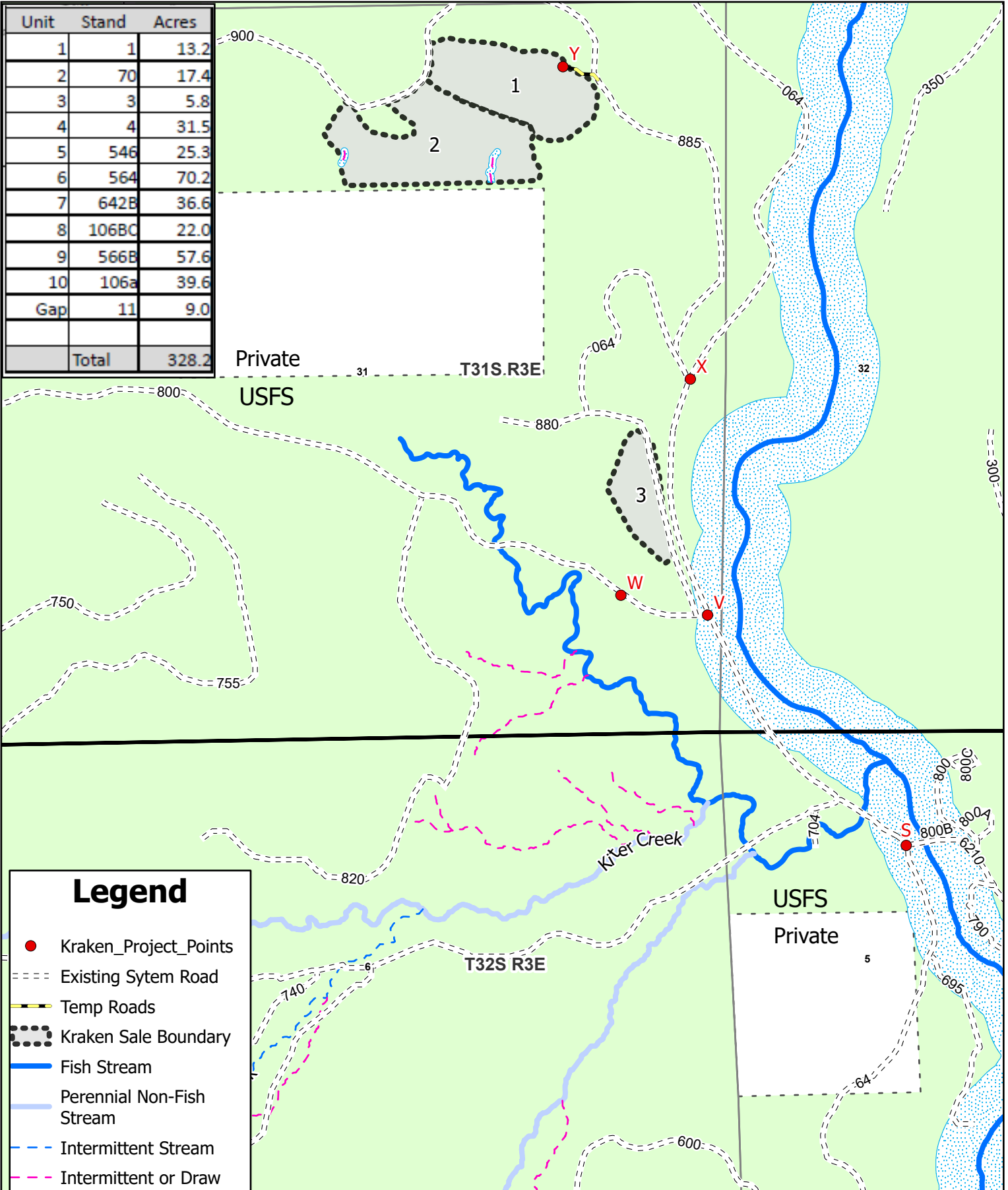


Unit	Stand	Acres
1	1	13.2
2	70	17.4
3	3	5.8
4	4	31.5
5	546	25.3
6	564	70.2
7	642B	36.6
8	106BC	22.0
9	566B	57.6
10	106a	39.6
Gap	11	9.0
Total		328.2



Legend

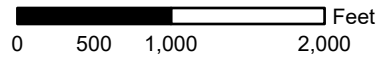
- Kraken_Project_Points
- Existing System Road
- Temp Roads
- ⋯ Kraken Sale Boundary
- Fish Stream
- Perennial Non-Fish Stream
- - - Intermittent Stream
- - - Intermittent or Draw
- ⋯ Stream Buffer Reserve
- USFS Lands

Kraken GNA Timber Sale
 - Exhibit "A" -
 T31S R3E, Section 31 and
 T32S R3E Sections 5, 6, 7, 8, 18
 Prospect, Oregon
 Net Cruise Acres = 328.2

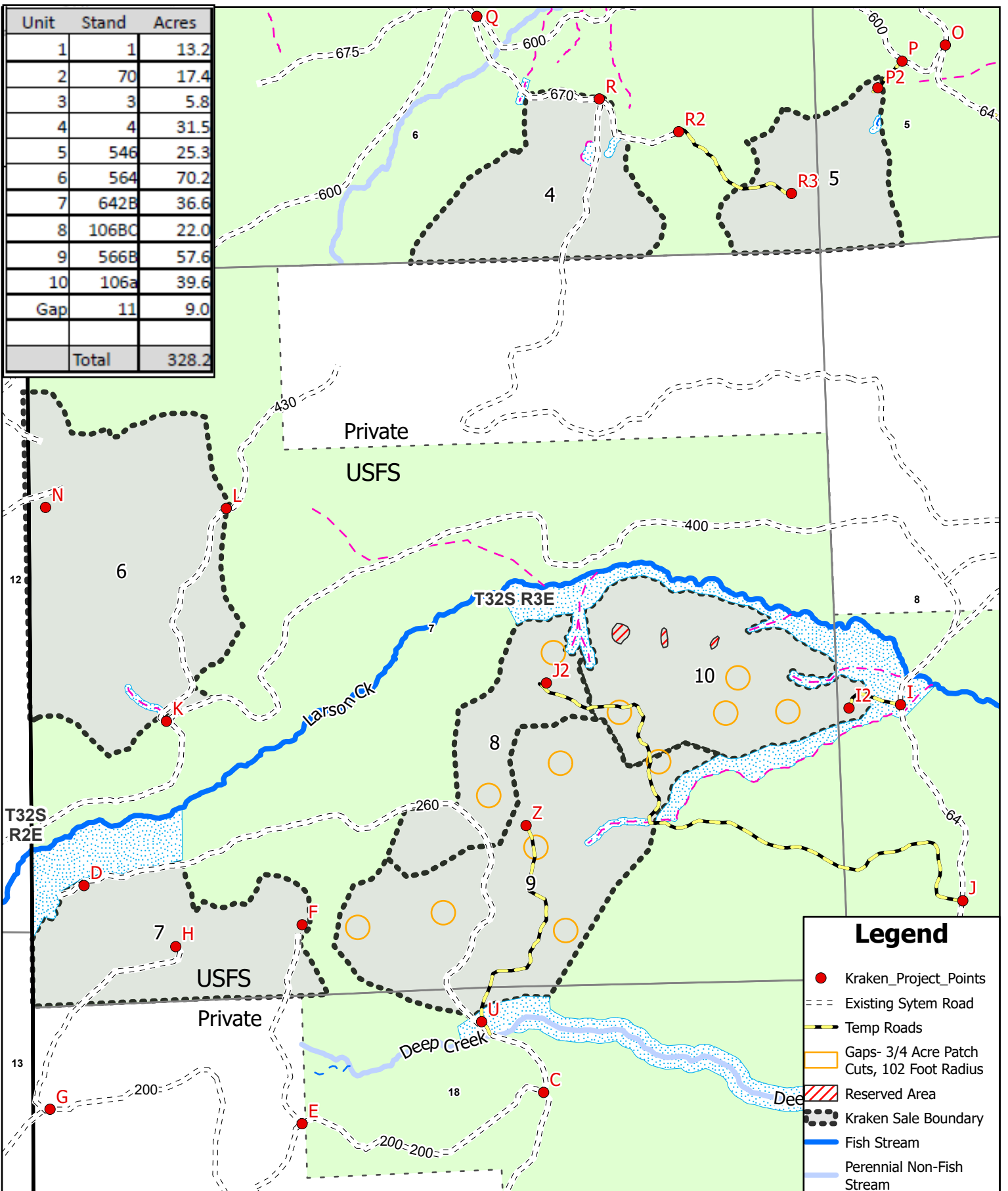


1:15,000

The information shown in Exhibit A Maps are approximate locations. Exact locations of features represented by maps symbols will be determined on site and shall depend upon the conditions that exist on site.



Unit	Stand	Acres
1	1	13.2
2	70	17.4
3	3	5.8
4	4	31.5
5	546	25.3
6	564	70.2
7	642B	36.6
8	106BC	22.0
9	566B	57.6
10	106a	39.6
Gap	11	9.0
Total		328.2



Legend

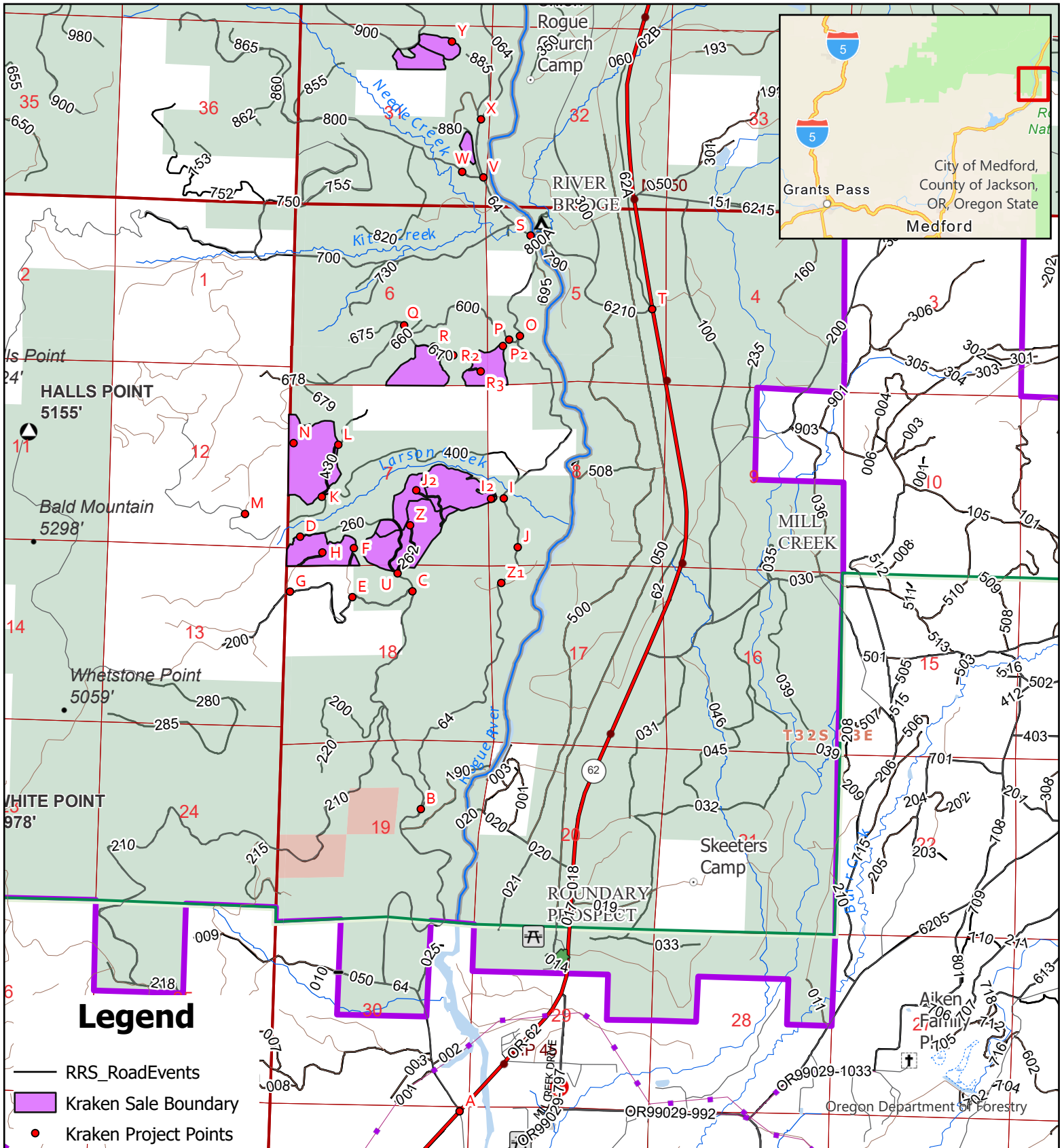
- Kraken_Project_Points
- Existing Sytem Road
- Temp Roads
- Gaps- 3/4 Acre Patch Cuts, 102 Foot Radius
- Reserved Area
- Kraken Sale Boundary
- Fish Stream
- Perennial Non-Fish Stream
- Intermittent Stream
- Intermittent or Draw
- Stream Buffer Reserve
- USFS Lands

Kraken GNA Timber Sale
 - Exhibit "A" -
 T31S R3E, Section 31 and
 T32S R3E Sections 5, 6, 7, 8, 18
 Prospect, Oregon
 Net Cruise Acres = 328.2



The information shown in Exhibit A Maps are approximate locations. Exact locations of features represented by maps symbols will be determined on site and shall depend upon the conditions that exist on site.

1:15,000
0 500 1,000 2,000 Feet



Kraken GNA Timber Sale
Exhibit "A" Vicinity Map
T31S R3E Section 31 and
T32S R3E Sections 5, 6, 7, 8, 18
Prospect, Jackson County Oregon
Net Cruise Acres=328.2

37 Miles to White City



1:46,000

The information shown in Exhibit A Maps are approximate locations. Exact locations of features represented by maps symbols will be determined on site and shall depend upon the conditions that exist on site.

